

PORTO FINO CONDO

6801 PORTO FINO CIRCLE, UNIT H-2
FORT MYERS, FL 33912



FOR LEASE: \$15.50 PSF + \$4.00 PSF CAM

ABOUT THE PROPERTY

Commercial condo in a professionally managed, upscale office park of professional and medical offices. Nicely finished, wood/carpet flooring, crown molding, full kitchen, reception/lobby, conference room and three private offices.

Conveniently located just off Six Mile Cypress Parkway near Century Link Sports Complex, home of the Minnesota Twins spring training. Easy access to all major roads, I-75 and Southwest Florida International Airport (RSW).

PROPERTY FEATURES

- ▣ SIZE: 1,250± SF
- ▣ ZONING: MPD (Lee County)
- ▣ YEAR BUILT: 2002
- ▣ UTILITIES: City Water & Sewer
- ▣ PROPERTY ID: 19-45-25-20-0000H.0000

Surrounded by Medical & Office Users



Office, medical and professional uses.

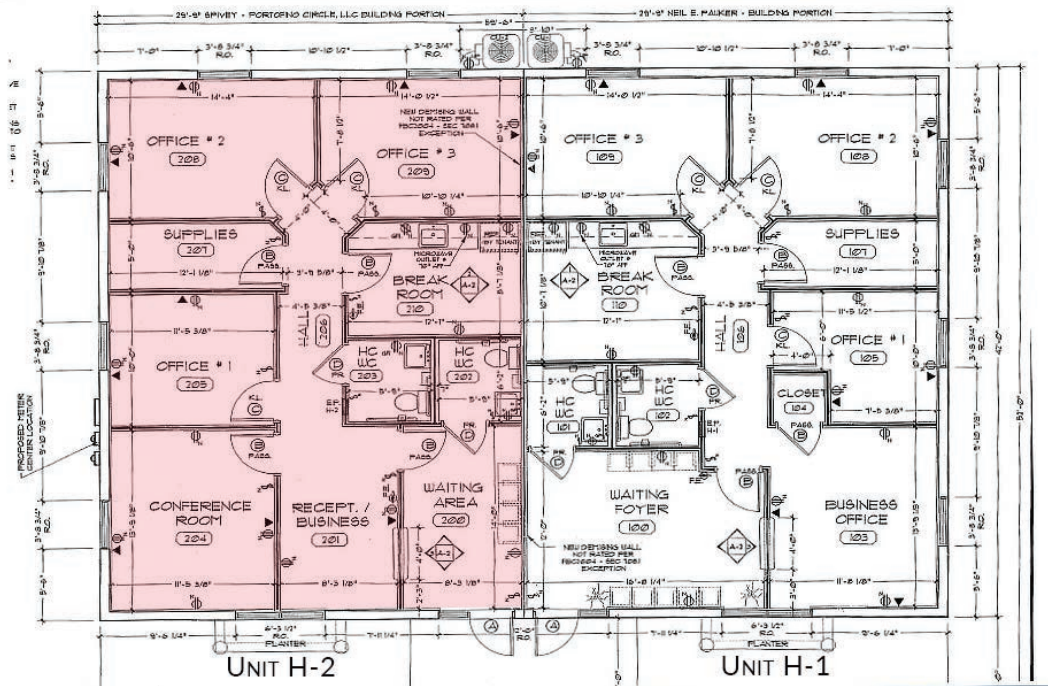
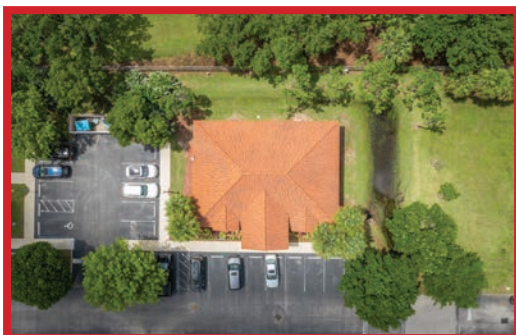
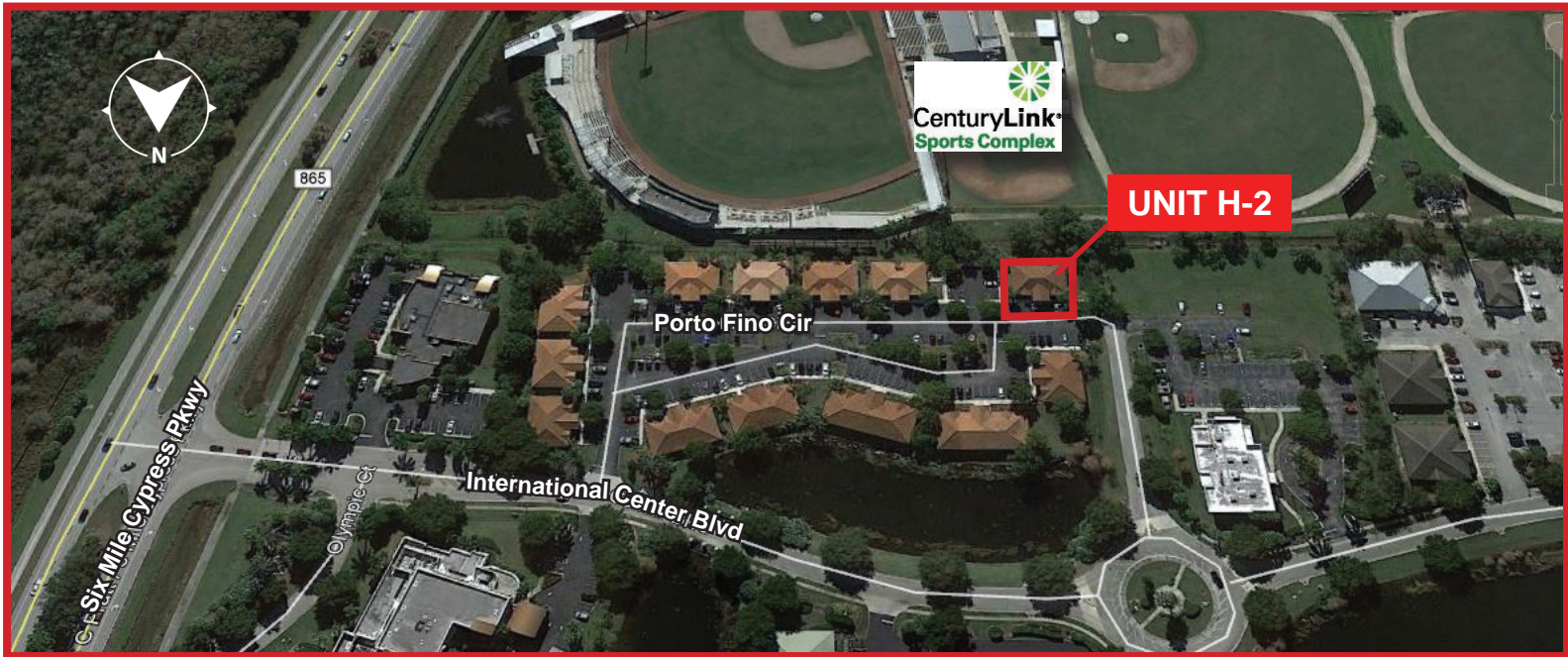
JIM BOBACK, CCIM
Broker/Owner

C 239-565-2616 • O 239-466-7770
JB@BobackCommercialGroup.com
www.BobackCommercialGroup.com

PORTO FINO CONDO

6801 PORTO FINO CIRCLE, UNIT H-2
FORT MYERS, FL 33912

UNIT H-2 - 1,250± SF



2021 DEMOGRAPHICS

	1 Mile	3 Miles	5 Miles
Population	4,133	42,789	136,157
# Households	2,027	20,490	62,546
Median HH Income	\$75,941	\$67,314	\$63,191
Median Age	43.9	55.4	49.4

JIM BOBACK, CCIM
Broker/Owner

C 239-565-2616 • O 239-466-7770
JB@BobackCommercialGroup.com
www.BobackCommercialGroup.com