

WESTGATE INDUSTRIAL PARK

5485 LEE STREET, LEHIGH ACRES, FL 33971

Boback
Commercial
Group
Commercial Sales & Leasing



FOR LEASE: \$3,000/MO + TAX

ABOUT THE PROPERTY

This Flex Warehouse Condo is located just off Westgate Blvd. in the Westgate Industrial Park. Easy access to I-75 from Lee St. and Colonial Blvd. Unit consists of one office, a kitchen/break area, two restrooms (one in the warehouse) and a showroom area.

PROPERTY FEATURES

- ▣ Unit 3: 2,000± SF
- ▣ Immediate tenant occupancy
- ▣ Unit has 830± SF of Office & 1,170± SF of Warehouse space
- ▣ Zoning: IL - Light Industrial (Lee County)
- ▣ Utilities: Water and Sewer, 3 Phase Power
- ▣ Year Built: 2004
- ▣ Ceiling Height: 18 feet
- ▣ Overhead Door: 12' x 16'



JIM BOBACK, CCIM
Broker/Owner

This document has been prepared by Boback Commercial Group for advertising and general information only. Boback Commercial Group makes no guarantees, representations or warranties of any kind, expressed or implied, regarding the information including, but not limited to, warranties of content, accuracy and reliability. Any interested party should undertake their own inquiries as to the accuracy of the information.

C 239-565-2616 • O 239-466-7770

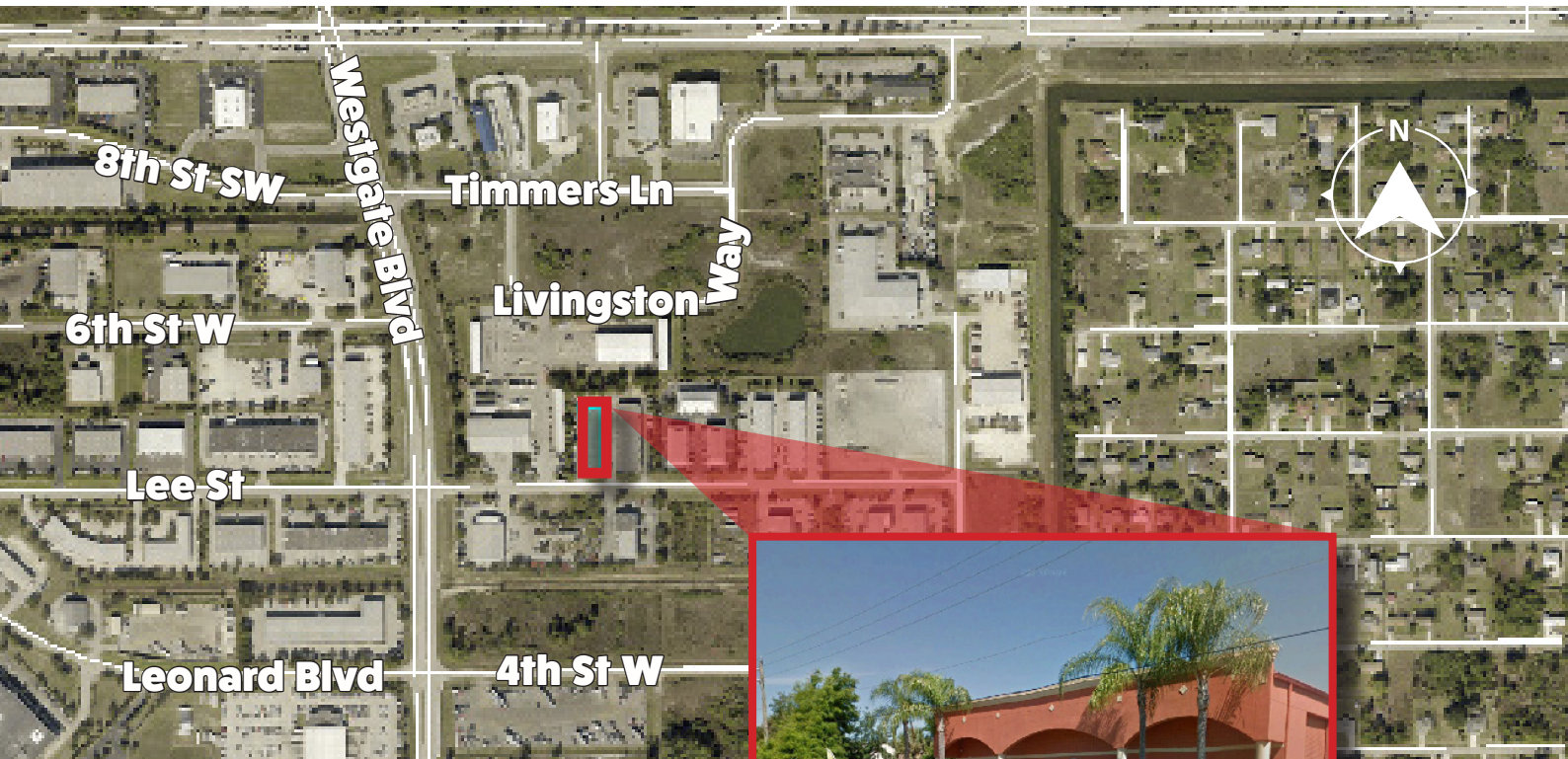
JB@BobackCommercialGroup.com

www.BobackCommercialGroup.com

WESTGATE INDUSTRIAL PARK

5485 LEE STREET, LEHIGH ACRES, FL 33971

AERIAL



JIM BOBACK, CCIM
Broker/Owner

This document has been prepared by Boback Commercial Group for advertising and general information only. Boback Commercial Group makes no guarantees, representations or warranties of any kind, expressed or implied, regarding the information including, but not limited to, warranties of content, accuracy and reliability. Any interested party should undertake their own inquiries as to the accuracy of the information.

C 239-565-2616 • O 239-466-7770
JB@BobackCommercialGroup.com
www.BobackCommercialGroup.com