

HIGH END OFFICE/MEDICAL SPACE FORMER ATTORNEY OFFICE

6800 Porto Fino Circle
Fort Myers, FL 33912

Boback
Commercial
Group
Commercial Sales & Leasing



FOR LEASE - \$18/SQFT + \$6.00 ESTIMATED CAM

ABOUT THE PROPERTY

Free standing building in an upscale, modern, office park. High end finishes. 7 offices, 2 conference rooms, waiting and reception area, full kitchen and 3 bathrooms. Currently being used as a medical office.

PROPERTY FEATURES

- ❑ Space Available: 2,500 +/- SF
- ❑ Zoning: MPD
- ❑ Utilities: City water and sewer
- ❑ Strap#: 19-45-25-20-00001.0000
- ❑ Area Description: Just off Six Mile Cypress Pkwy. Close to Daniels Road and I-75. Heavy concentration of medical and office users nearby. Close proximity to all major roadways.



JIM BOBACK, CCIM
Broker/Owner

C 239-565-2616 • O 239-466-7770
JB@BobackCommercialGroup.com
www.BobackCommercialGroup.com

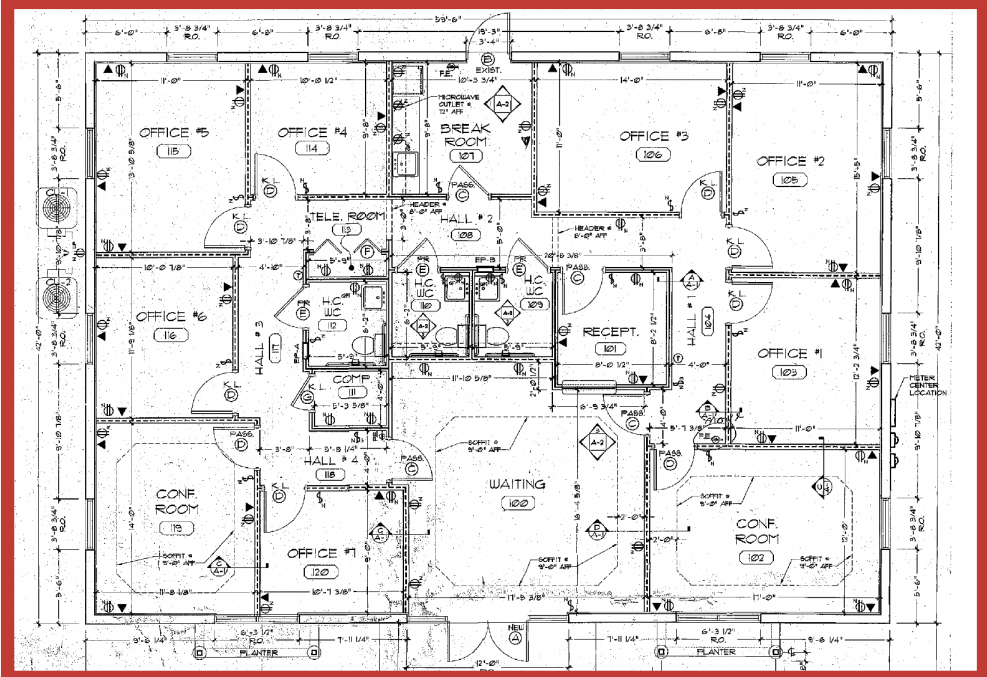
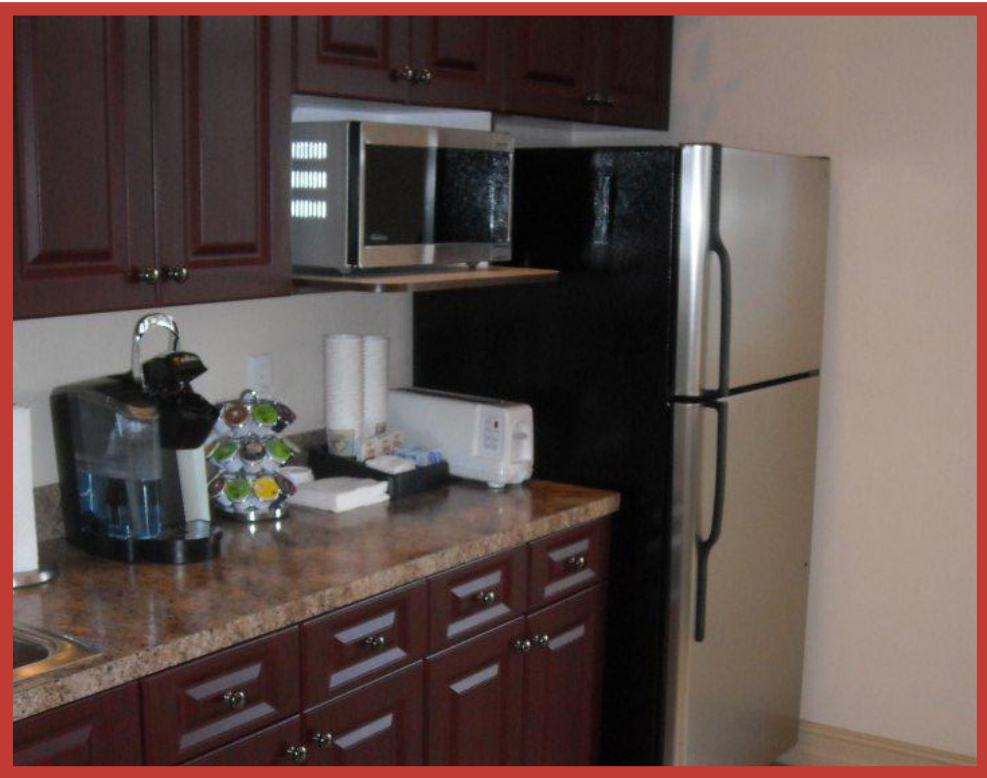
This document has been prepared by Boback Commercial Group for advertising and general information only. Boback Commercial Group makes no guarantees, representations or warranties of any kind, expressed or implied, regarding the information including, but not limited to, warranties of content, accuracy and reliability. Any interested party should undertake their own inquiries as to the accuracy of the information.

HIGH END OFFICE/MEDICAL SPACE FORMER ATTORNEY OFFICE

6800 Porto Fino Circle
Fort Myers, FL 33912



NEAR MANY MEDICAL SERVICE PROVIDERS & PROFESSIONAL OFFICES



JIM BOBACK, CCIM
Broker/Owner

C 239-565-2616 • O 239-466-7770
JB@BobackCommercialGroup.com
www.BobackCommercialGroup.com

This document has been prepared by Boback Commercial Group for advertising and general information only. Boback Commercial Group makes no guarantees, representations or warranties of any kind, expressed or implied, regarding the information including, but not limited to, warranties of content, accuracy and reliability. Any interested party should undertake their own inquiries as to the accuracy of the information.